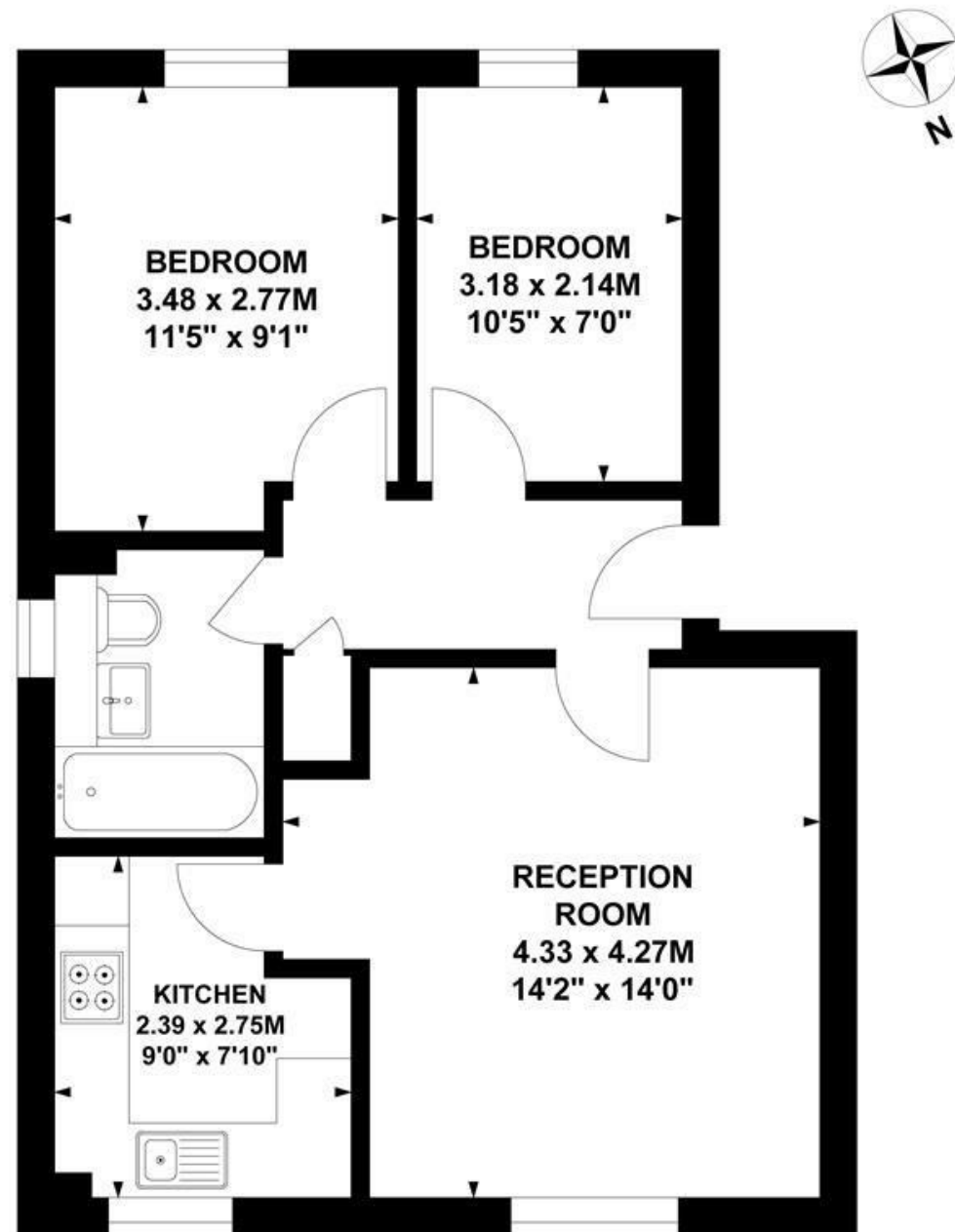


Brindleyplace Alperton, HA0

Approximate gross internal area
50.02 sq m / 538 sq ft



Ground Floor

This plan is not to scale and must be used as layout guidance only. All measurements and areas are approximate and should not be relied upon to provide accurate information. This plan must not be relied upon when making property valuations, design considerations or any other such relevant decisions. We accept no responsibility or liability (whether in contract, tort or otherwise) in relation to any loss whatsoever arising from or in connection with any use of this plan or the adequacy, accuracy or completeness of it or any information within it.



FLAT

Brindley Close HA0 £1,750 Per Month

FEATURES

- Separate kitchen and bathroom
- Excellent transport links
- Supermarket & local amenities nearby
- Secure entry & well-maintained building

FLAT

Brindley Close HA0

£1,750 Per Month

Newly refurbished flat located on Brindley Close, set in a private development overlooking the Grand Union Canal and is perfectly located just moments from Alperton tube (Piccadilly line).

This delightful property features two well-proportioned bedrooms, a spacious reception room, modern bathroom and kitchen, and off street parking.

Situated in a lively neighborhood, this flat offers convenient access to local amenities, including shops, restaurants, and parks.

